

Post Floods Rehabilitation Activities to Support Cement Sector

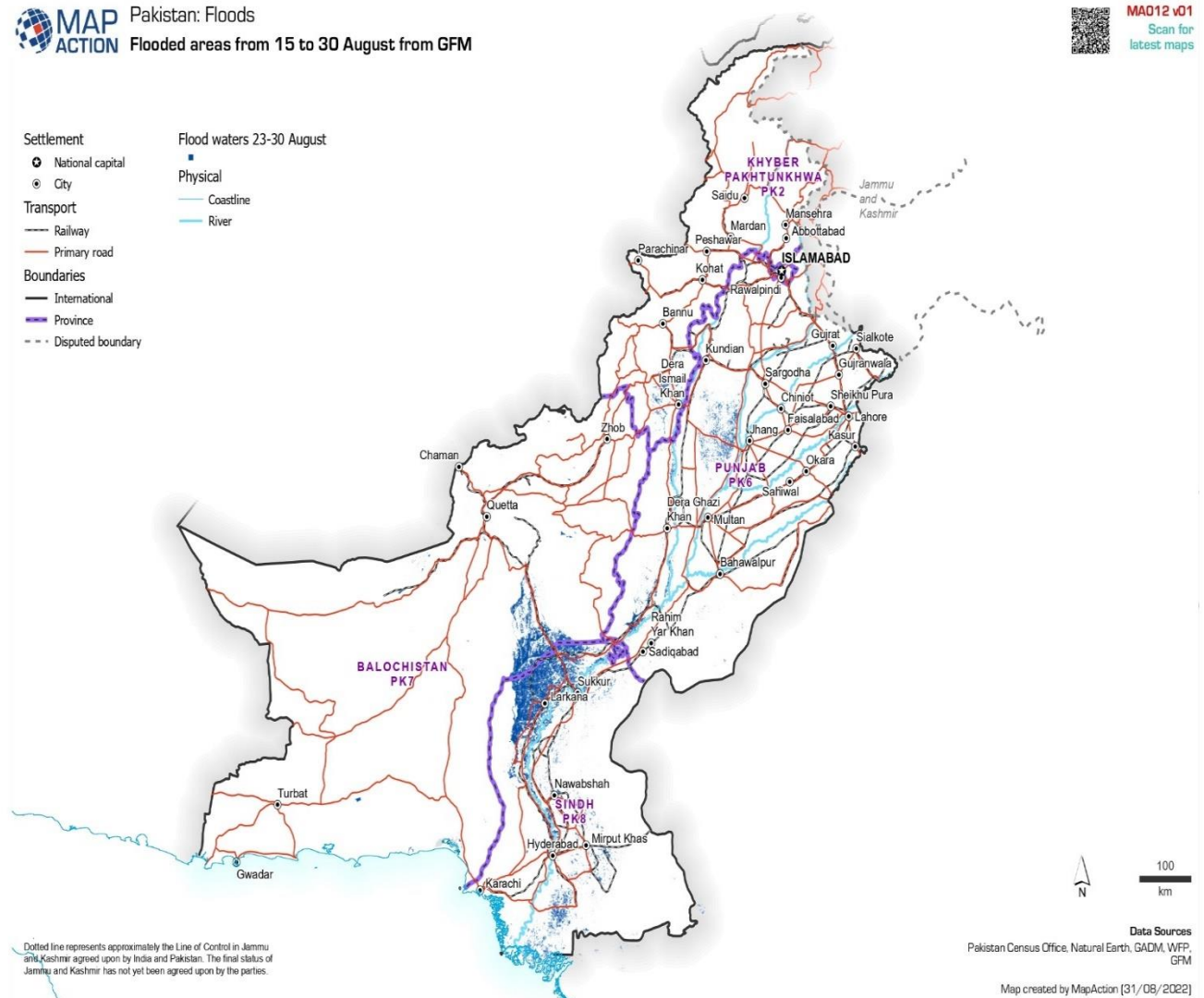
Tuesday, 27 September, 2022



Heavy floods have hit Pakistan amid record-breaking rains in Sindh and Baluchistan. Almost 1 million homes have been damaged or destroyed, and around 33M people are affected by floods. Meanwhile, the death toll touches 1,290 including around 450 children. Current floods are one of the worst natural disasters witnessed by the country since 2010. Huge damage has occurred to the infrastructure and agriculture of the country which is quite higher than what was witnessed during the floods of 2010.

On the other hand, if we analyze the cement sector, we can see that the industry has been facing difficult times amid record-high coal, electricity, and fuel prices and the dispatches have plunged drastically, and the pre floods conditions did not look good for the sector. But the post floods conditions can be supportive of the construction sector as we have witnessed in the past that after every major natural disaster, a rally is seen in the cement sector amid increased demand due to the rehabilitation activities for the infrastructure of affected areas.

In the past 20 years, Pakistan has witnessed two major natural disasters. The first one was the Kashmir earthquake on the 8th of Oct 2005 and the second one was witnessed in 2010 due to the major floods in the country. If we look at the historical data of different companies it can be seen that such disasters have caused an upward rally and we expect to see the same in the current situation. We will be discussing 7 companies with bright aspects.



Fauji Cement Company Limited | FCCL | TP - 22

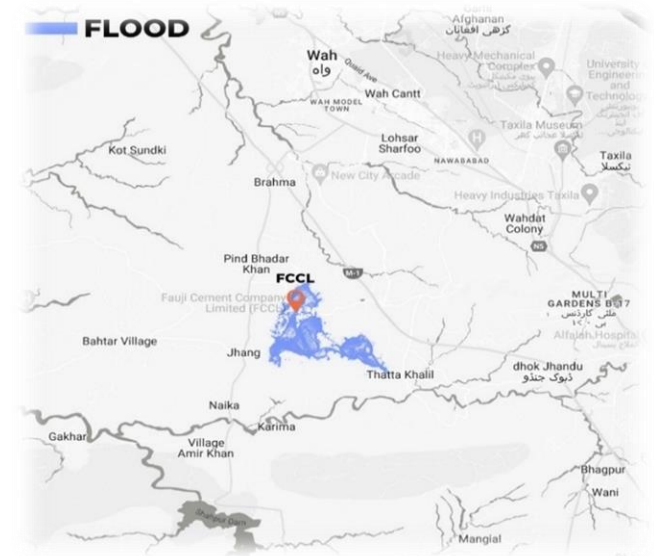
Tuesday, 27 September, 2022



FCCL is one of the leading producers of a wide range of cement in Pakistan with an annual total production capacity of 3.5 million tons of cement. If we look at the financial ratios of the company it has an average gross margin for the last 5 years of 21%, an operating margin of 16.5%, and net profit margins of 11.29%. Furthermore, the total debt to equity ratio of the company stands at 0.13x and finance cost as a percentage of EBIT stands at 3.8% as of FY22. Due to high-interest rates prevailing in the country, low debt to equity ratio is likely to keep the company's net profit margins healthy. FCCL is currently trading at a P/E Ratio (TTM) of 4.7x.

The plant of Fauji Cement Company Limited (FCCL) is located at Jhang Bahatar, District Attock near Islamabad and it can be seen in the graph that the area between Jhang and Dera Ismail Khan is affected by the floods which provides a geographical advantage to the FCCL for the upcoming demand for construction in the flood affected areas.

Now if we look at the historical trend for the FCCL we can see that in 2005 after the 8th of Oct, a major rally was witnessed in the FCCL and the share price went up from 17.58 to 28 recording an upside of almost 60%. Moreover, in 2010 Pakistan was hit by floods in July and in those days a surge in the price of scrip can be seen as it went up from 4.52 to 5.5 recording an upside of almost 22%. **We have a BUY stance on the scrip with a DCF based Jun-23 TP of Rs 22 which provides an upside potential of 44%.**



Kohat Cement Company Limited | KOHC | TP - 210

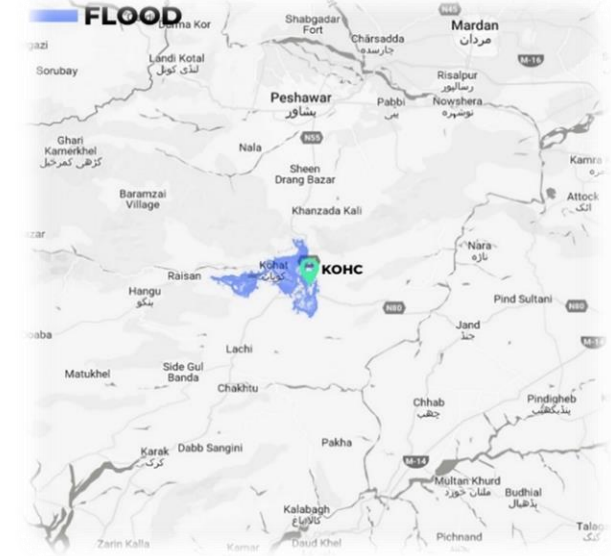
Tuesday, 27 September, 2022



KOHC is one of the leading cement manufacturing companies in Pakistan. It has an annual capacity of 4.78 million tons of Grey Clinker and 135 thousand tons of White Clinker. If we look at the financial ratios of the company it has an average gross margin for the last 5 years of 22.74%, an operating margin of 20.69%, and net profit margins of 12.76%. Furthermore, the total debt to equity ratio of the company stands at 0.19x and finance cost as a percentage of EBIT stands at 5.68% as of FY22. Due to high-interest rates prevailing in the country, low debt to equity ratio is likely to keep the company's net profit margins healthy. KOHC is currently trading at a P/E Ratio (TTM) of 6.5x.

The plant of Kohat Cement Company Limited is located at Rawalpindi Road, Kohat, Pakistan. As it can be seen that flooded areas of KPK like Sawat and Kumrat are geographically quite near to KOHC and it provides an advantage to KOHC for the upcoming demand for construction in the flood-affected areas.

Now if we look at the historical trend for the KOHC we can see that in 2005 after the 8th of Oct a major rally was witnessed in the KOHC and the share price went up from 55 to 92 recording an upside of almost 68%. Moreover, in 2010 Pakistan was hit by floods in July and in those days a surge in the price of scrip can be seen as it went up from 5.85 to 8.05 recording an upside of almost 37%. **We have a BUY stance on the scrip with a DCF based Jun-23 TP of Rs 210 which provides an upside potential of 30%.**



D.G. Khan Cement Company Limited | DGKC | TP - 80

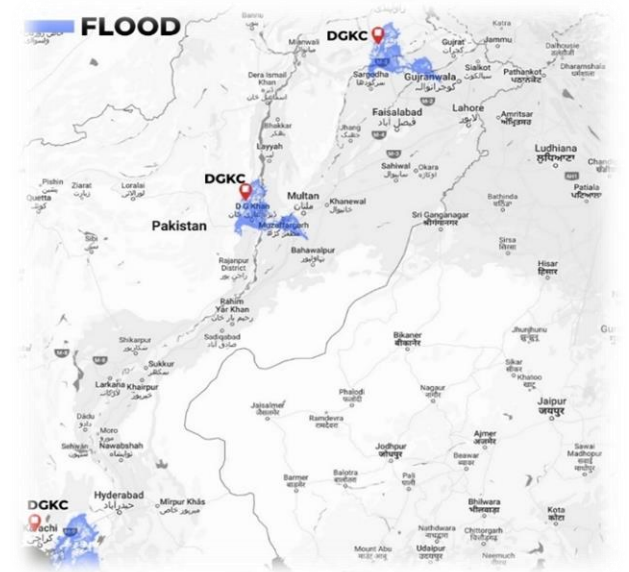
Tuesday, 27 September, 2022



DGKC is amongst largest the cement manufacturers of Pakistan with a production capacity of 22,400 tons per day (6.72 million tons/annum) with an approximate market share of 11%. If we look at the financial ratios of the company it has an average gross margin for the last 5 years of 16.35%, an operating margin of 15%, and net profit margins of 8.08%. Furthermore, the total debt to equity ratio of the company stands at 0.56x and finance cost as a percentage of EBIT stands at 37.23% as of FY22. DGKC is currently trading at a P/E Ratio (TTM) of 9.01x.

DGKC has a strong presence all over Pakistan. With its plants stretched from North to Center to South, DGKC covers the market in far-reach areas of Pakistan through an extensive dealership network of over 2,200 dealers. DGKC has four cement plants, two plants are located at Dera Ghazi Khan, one at Khairpur Distt. Chakwal, and one at Hub Lasbela District (Balochistan). Its presence in the north and south gives it a major advantage as there all plants are near the flooded areas.

Now if we look at the historical trend for the DGKC we can see that in 2005 after the 8th of Oct a major rally was witnessed and the share price went up from 81 to 154 recording an upside of almost 92%. Moreover, in 2010 Pakistan was hit by floods in July and in those days a surge in the price of scrip can be seen as it went up from 23.26 to 32.37 recording an upside of almost 39%. **We have a BUY stance on the scrip with a DCF-based Jun-23 TP of Rs 80 which provides an upside potential of 30%.**



Lucky Cement Limited | LUCK | TP - 600

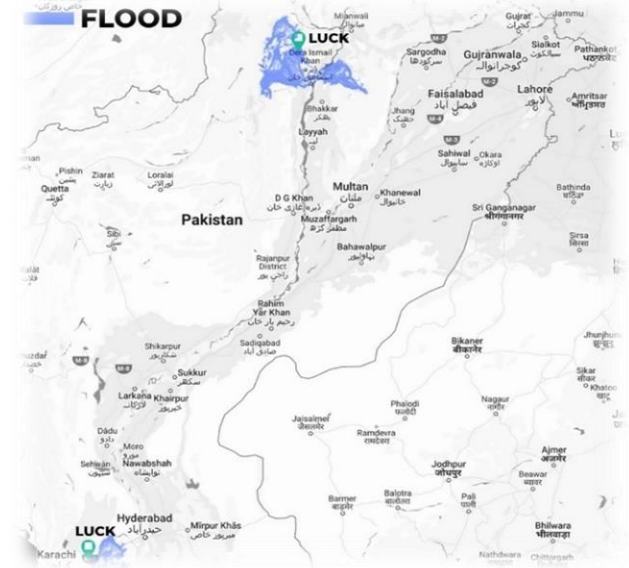
Tuesday, 27 September, 2022



Lucky Cement is one of the largest producers and leading exporters of quality cement in Pakistan with an annual capacity of 15.3 million tons with an approximate market share of 18%. If we look at the financial ratios of the company it has an average gross margin for the last 5 years of 27.44%, an operating margin of 24.24%, and net profit margins of 19.34%. Furthermore, the total debt to equity ratio of the company stands at 0.12x and finance cost as a percentage of EBIT stands at 1.81% as of FY22. Due to high-interest rates prevailing in the country, low debt to equity ratio is likely to keep the company's net profit margins healthy. LUCK is currently trading at a P/E Ratio (TTM) of 10.44x.

Lucky Cement Limited has production facilities at strategic locations in Karachi to cater to the Southern regions and Pezu, Khyber Pakhtunkhwa to furnish the Northern areas of the country. Its presence in the north and south gives it a major advantage as there all plants are near the flooded areas.

Now if we look at the historical trend for LUCK, we can see that in 2005 after the 8th of Oct a major rally was witnessed and the share price went up from 59.5 to 131 recording an upside of almost 119%. Moreover, in 2010 Pakistan was hit by floods in July and in those days a surge in the price of scrip can be seen as it went up from 62.5 to 79 recording an upside of almost 26%. **We have a BUY stance on the scrip with a DCF-based Jun-23 TP of Rs 600 which provides an upside potential of 21.6%.**



Maple Leaf Cement Factory Limited | MLCF | TP - 38

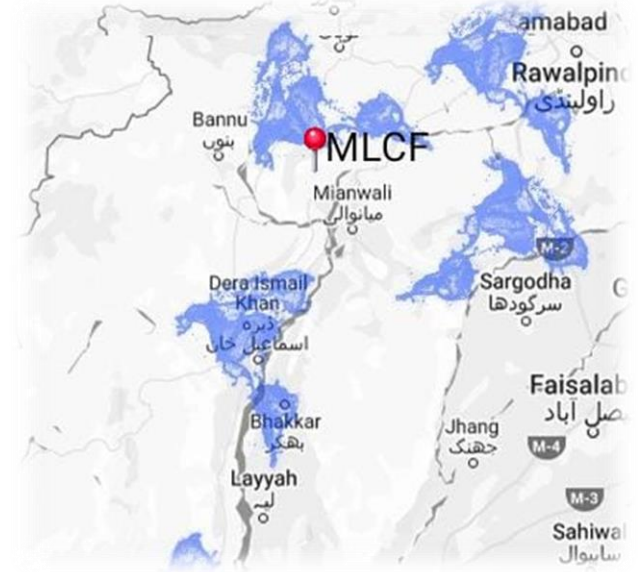
Tuesday, 27 September, 2022



Maple Leaf Cement is the largest single cement production site in Pakistan with an annual total installed capacity for clinker production of 5,585,342 tons. If we look at the financial ratios of the company it has an average gross margin for the last 5 years of 18%, an operating margin of 13.2%, and net profit margins of 5.64%. Furthermore, the total debt to equity ratio of the company stands at 0.58x and finance cost as a percentage of EBIT stands at 19.51% as of FY22. MLCF is currently trading at a P/E Ratio (TTM) of 8.61x.

The Company markets and sells its products all over Pakistan with market presence mainly in North and Central regions. Plant of MLCF is located at Iskanderabad, District Mianwali, Punjab, Pakistan. Which provides a geographical edge to MLCF in affected areas of north region.

Now if we look at the historical trend for MLCF, we can see that in 2005 after the 8th of Oct a major rally was witnessed and the share price went up from 32 to 49 recording an upside of almost 53%. Moreover, in 2010 Pakistan was hit by floods in July and in those days a surge in the price of scrip can be seen as it went up from 3.07 to 3.81 recording an upside of almost 23.5%. **We have a BUY stance on the scrip with a DCF-based Jun-23 TP of Rs 38 which provides an upside potential of 34%.**



Steel Sector, The Other Beneficiary

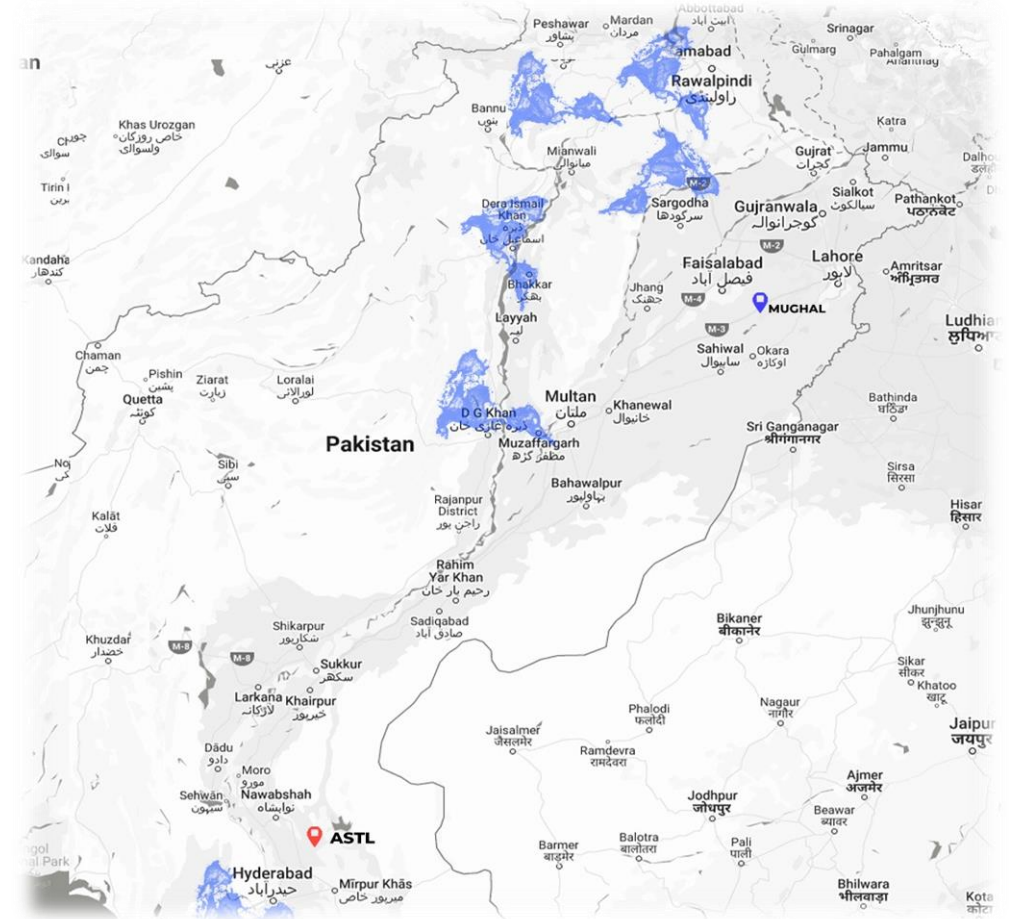
Tuesday, 27 September, 2022



The steel and Cement industries have a strong correlation. As per International Standards, every 5MTs of cement used in infrastructure projects requires 1MT of steel (Source National Steel Advisory Council). Amreli Steels Limited and Mughal Iron & Steel Industries Limited are among the largest manufacturer of steel billet and rebar in Pakistan.

Firstly, the plant of Mughal Iron is situated in Sheikhupura - Faisalabad Rd, Karian Wala having a re-rolling active capacity of 630,000 metric tons per annum. Furthermore, the melting capacity of MUGHAL stands at 429,100 metric tons per annum. If we look at the financial ratios of MUGHAL, it has an average gross margin for the last 5 years of 12.54%, an operating margin of 10.22%, and net profit margins of 5.65%. Furthermore, the total debt to equity ratio of the company stands at 1.41x, the five-year average ROE stands at 15.71%, and finance cost as a percentage of EBIT stands at 29.72% as of FY22. **We have a BUY stance on MUGHAL with a DCF-based Jun-23 TP of Rs 80 which provides an upside potential of 20%.**

Secondly, the two re-rolling plants of ASTL are situated at S.I.T.E. Karachi and Dhabeji having a capacity of 180,000 metric tons and 425,000 metric tons of rebars per annum respectively. Their Melt Shop plant in Dhabeji, Sindh is the largest billet manufacturing facility in Pakistan boasting a nameplate capacity of 600,000 metric tons per annum. Moreover, ASTL has an average gross margin for the last 5 years of 11.17%, an operating margin of 6.56%, and net profit margins of 2.29%. Furthermore, the total debt to equity ratio of the company stands at 1.34x, the five-year average ROE stands at 4.17%, and finance cost as a percentage of EBIT stands at 52.61% as of FY22. **We have a BUY stance on ASTL with a DCF-based Jun-23 TP of Rs 36 which provides an upside potential of 33%.**



DISCLAIMER

This report has been prepared by Abbasi & Company (Private) Limited and is provided for information purposes only. Under no circumstances, this is to be used or considered as an offer to sell or solicitation of any offer to buy. While reasonable care has been taken to ensure that the information contained therein is not untrue or misleading at the time of publication, we make no representation as to its accuracy or completeness and it should not be relied upon as such. From time to time, Abbasi & Company (Private) Limited and or any of its officers or directors may, as permitted by applicable laws, have a position, or otherwise be interested in any transaction, in any securities directly or indirectly subject of this report. This report is provided only for the information of professional advisers who are expected to make their own investment decisions without undue reliance on this report. Investments in capital markets are subject to market risk and Abbasi & Company (Private) Limited accepts no responsibility whatsoever for any direct or indirect consequential loss arising from any use of this report or its contents. In particular, the report takes no account of the investment objectives, financial situation and needs of investors, who should seek further professional advice or rely upon their own judgment and acumen before making any investment. The views expressed in this report are those of Abbasi & Company (Private) Limited Research Department and do not necessarily reflect those of the company or its directors. Abbasi & Company (Private) Limited as a firm may have business relationships, including investment-banking relationships, with the companies referred to in this report. Abbasi & Company (Private) Limited does not act as a market maker in the securities of the subject company. Abbasi & Company (Private) Limited or any officers, directors, associates or close relatives do not have a financial interest in the securities of the subject company to an amount exceeding 1% of the value of the securities of the subject company at the time of issuance of this report. Abbasi & Company (Private) Limited or any officers, directors, associates or close relatives are not currently serving or have served in the past three years as a director or officer of the subject company. Abbasi & Company (Private) Limited or any officers, directors, associates or close relatives have not received compensation from the subject company in the previous 12 months. The subject company currently is not, or during the 12-month period preceding the date of publication or distribution of this report, was not, a client of Abbasi & Company (Private) Limited. We have not managed or co-managed a public offering or any take-over, buyback or delisting offer of securities for the subject company in the past 12 months and/or received compensation for corporate advisory services, brokerage services or underwriting services from the subject company in the past 12 months. Abbasi & Company (Private) Limited does not expect to receive or intend to seek compensation for corporate advisory services or underwriting services from the subject company in the next 3 months. All rights reserved by Abbasi & Company (Private) Limited. This report or any portion hereof may not be reproduced, distributed or published by any person for any purpose whatsoever.

VALIDITY OF THE PUBLICATION OR REPORT

The information may be subject to change without notice, its accuracy is not guaranteed, it may be incomplete or condensed and it may not contain all material information concerning the company, jurisdiction or financial instruments referred to in this report. The valuations, opinions, estimates, forecasts, ratings or risk assessments herein constitutes a judgment as of the date of this report and were based upon several estimates and assumptions and are inherently subject to significant uncertainties and contingencies. It can be expected that one or more of the estimates on which the valuations, opinions, estimates, forecasts, ratings or risk assessments were based will not materialize or will vary significantly from actual results. Therefore, the inclusion of the valuations, opinions, estimates, forecasts, ratings or risk assessments described herein is not to be relied upon as a representation and/or warranty by Abbasi & Company (Private) Limited and/or its other associated and affiliated companies, that:

- I. Such valuations, opinions, estimates, forecasts, ratings or risk assessments or their underlying assumptions will be achieved, and
- II. There is any assurance that future results or events will be consistent with any such valuations, opinions, estimates, forecasts, ratings or risk assessments stated therein

DEFINITION OF TERMS

TP	Target Price	DDM	Dividend Discount Model	FCF	Free Cash Flows
FCFE	Free Cash Flows to Equity	FCFF	Free Cash Flows to Firm	DCF	Discounted Cash Flows
PE	Price to Earnings Ratio	PB	Price to Book Ratio	BVPS	Book Value Per Share
EPS	Earnings Per Share	DPS	Dividend Per Share	ROE	Return of Equity
ROA	Return on Assets	SOTP	Sum of the Parts	JPB	Justified Price to Book

Ratings are updated to account for any development impacting the economy/sector/company, changes in analysts' assumptions or a combination of these factors.

VALUATION METHODOLOGY

To arrive at our Target Price, Abbasi & Company (Private) Limited uses different valuation methods which include:

- I. Discounted Cash Flow Model
- II. Dividend Discount Model
- III. Relative Valuation Model
- IV. Sum of Parts Valuation

RATINGS CRITERIA

Abbasi & Company (Private) Limited employs a three-tier ratings system to rate a stock and sector, as mentioned below, which is based upon the level of expected return for a specific stock and outlook of sector. The rating is based on the following with stated time horizon

Stock Rating	Expected Total Return
BUY	Greater than 15%
HOLD	Between -5% to 15%
SELL	Less than and equal to -5%

Sector Rating	Sector Outlook
Overweight	Positive
Market Weight	Neutral
Underweight	Negative

RESEARCH ANALYST

Muhammad Ahmed
Phone: (+92) 42 38302028
Ext: 118
Email: mahmed@abbasiandcompany.com

HEAD OFFICE

6 - Shadman, Lahore
Phone: (+92) 42 38302028
Email: support@abbasiandcompany.com
web: www.abbasiandcompany.com